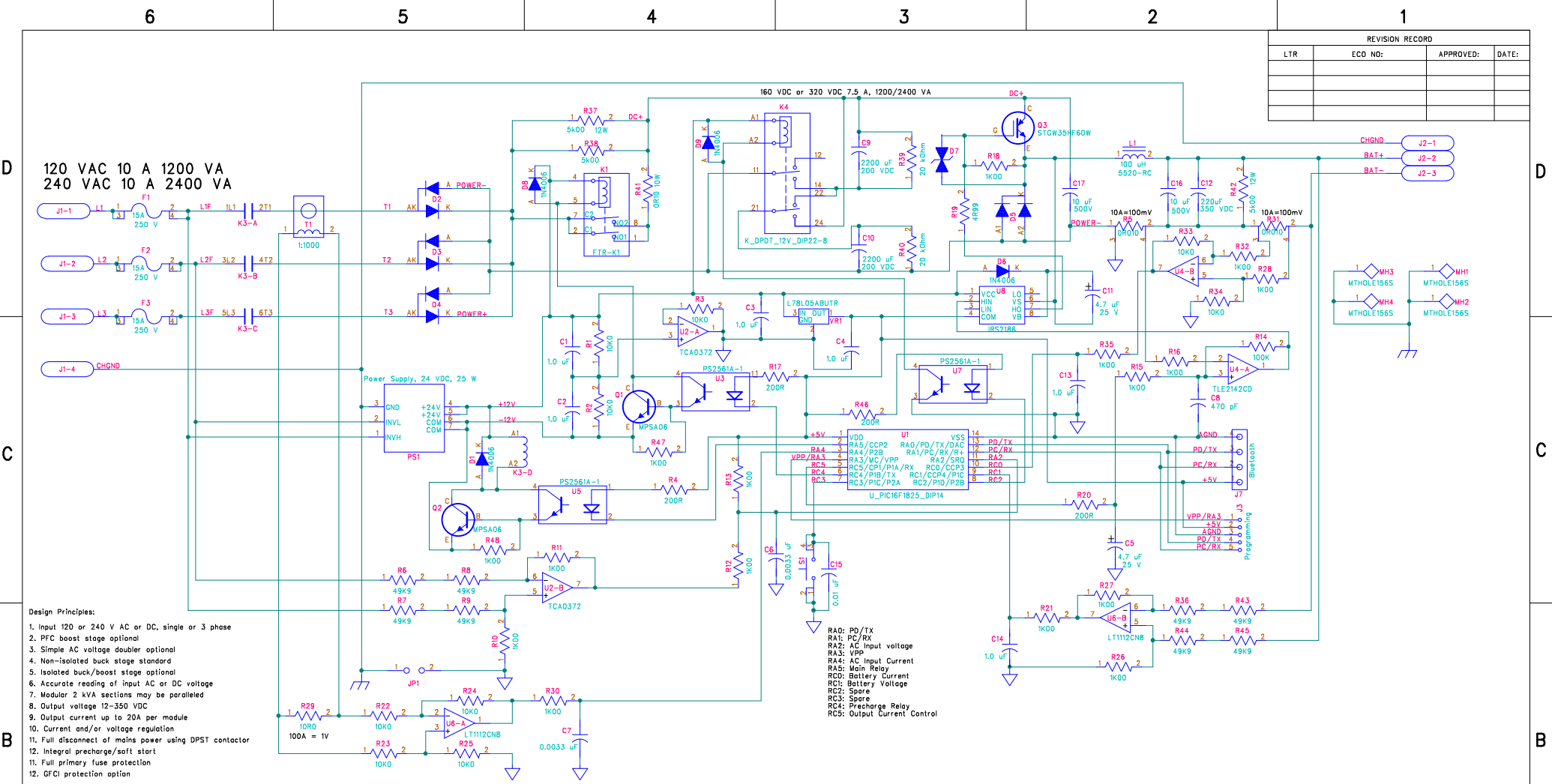


REVISION RECORD			
LTR	ECO NO:	APPROVED:	DATE:



- Design Principles:**
1. Input 120 or 240 V AC or DC, single or 3 phase
  2. PFC boost stage optional
  3. Simple AC voltage doubler optional
  4. Non-isolated buck stage standard
  5. Isolated buck/boost stage optional
  6. Accurate reading of input AC or DC voltage
  7. Modular 2 kVA sections may be paralleled
  8. Output voltage 12-350 VDC
  9. Output current up to 20A per module
  10. Current and/or voltage regulation
  11. Full disconnect of mains power using DPST contactor
  12. Integral precharge/soft start
  11. Full primary fuse protection
  12. GFCI protection option

COMPANY: \_\_\_\_\_  
 TITLE: \_\_\_\_\_

# EV\_Charger PCB

DRAWN: PES	DATED: 11/7/14
CHECKED: _____	DATED: _____
QUALITY CONTROL: _____	DATED: _____
RELEASED: _____	DATED: _____

CODE: _____	SIZE: _____	DRAWING NO: _____	REV: _____
SCALE: _____	SHEET: OF _____		