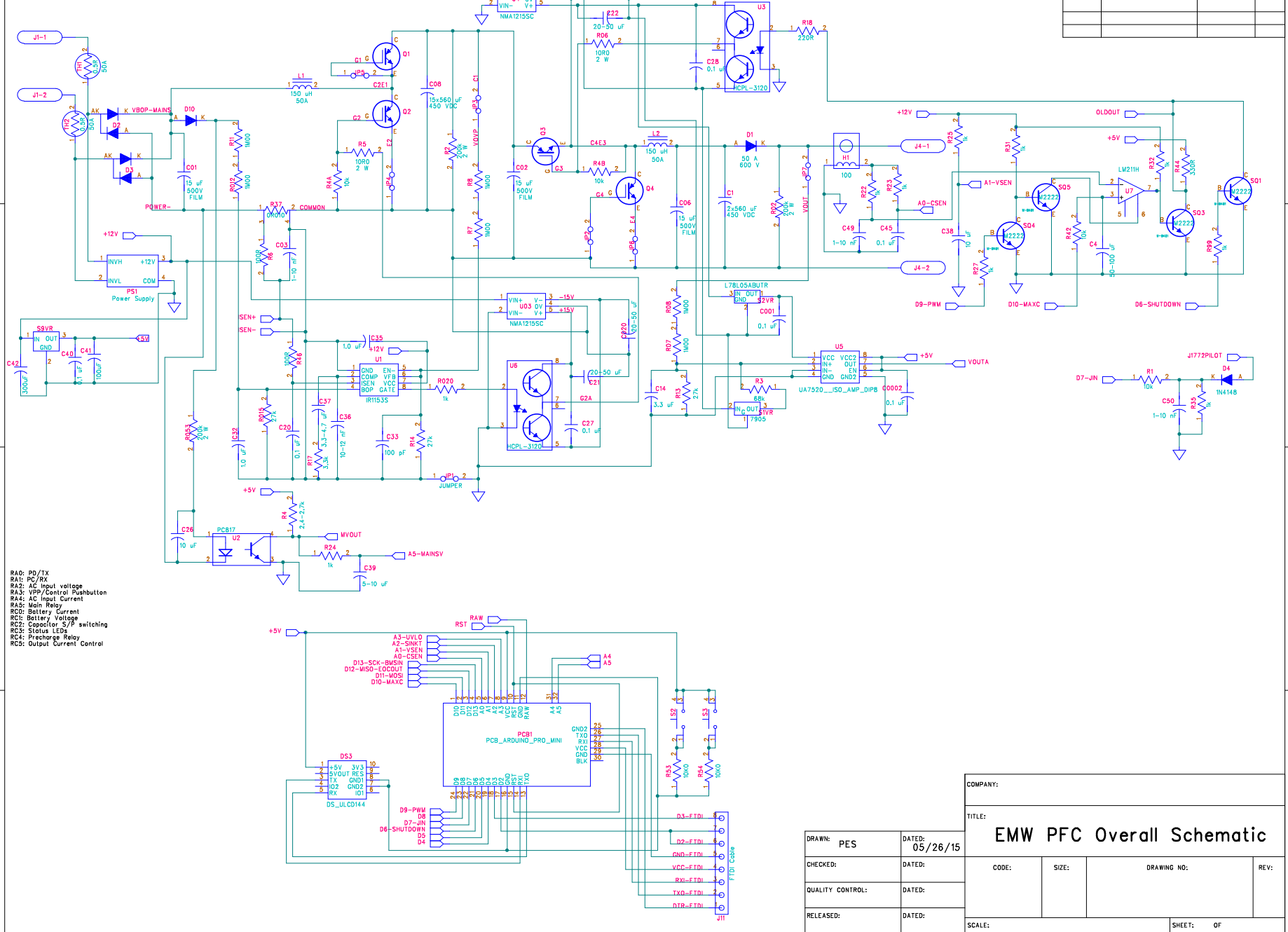


100-280 VAC

REVISION RECORD			
LTR	ECO NO:	APPROVED:	DATE:



- RA0: PD/TX
- RA1: PC/RX
- RA2: AC Input Voltage
- RA3: VPP/Control Pushbutton
- RA4: AC Input Current
- RA5: Main Relay
- RC0: Battery Current
- RC1: Battery Voltage
- RC2: Capacitor S/P switching
- RC3: Status LEDs
- RC4: Precharge Relay
- RC5: Output Current Control

COMPANY:		TITLE:	
DRAWN: PES		DATED: 05/26/15	
EMW PFC Overall Schematic			
CHECKED:	DATED:	CODE:	SIZE:
QUALITY CONTROL:	DATED:	DRAWING NO.:	REV:
RELEASED:	DATED:	SCALE:	SHEET: OF